



SUBMITTAL/TECHNICAL DATA SHEET

Doors are ideally suited for new installations or for remodeling in masonry, tile, wood or other wall and ceiling surfaces. The design avoids the additional labor to mud or plaster the flange due to it being hidden behind the door. The beveled edges and concealed door frame provide an appearance that allows the unit to blend into the wall better than other doors where the door frame is readily apparent.

Door and Frame are fabricated from 16 gauge, galvanized steel with a prime coat finish.

Hinge is fully concealed and mounted on the long side of the rectangular door panel.

Latch is screwdriver operated cam latch.



SKU: **ADC-HF**

HIDDEN FLANGE ACCESS DOOR



■ DIMENSIONS AND APPEARANCE

>> CLICK TO VIEW ADDITIONAL DETAILS AND PRICING <<

GUIDE SPECIFICATION

Hidden Flange Access Doors (Specify model number and options). Access door and frame shall be fabricated from 16 gauge galvanized steel with a prime coat finish. Doors to have concealed pantograph hinges. Latch shall be screwdriver operated cam latch.

MODEL NUMBER AND OPTIONS SELECTION

BASE MODEL NUMBER

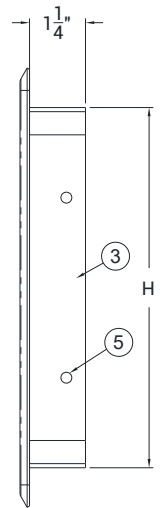
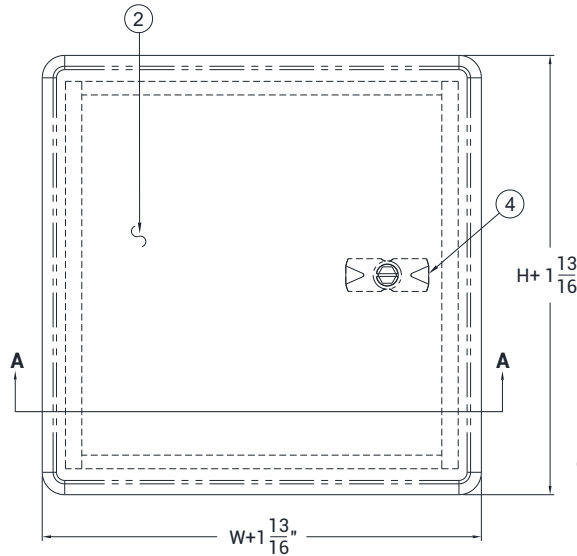
-HF Hidden Flange Access Door

SUFFIX OPTIONS

- AKL Allen Key Latch
- CL Cylinder Lock (one per door)
- CLD Cylinder Lock with Dust Shutter (one per door)

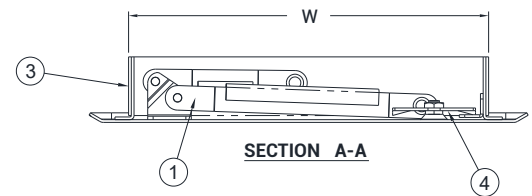
STANDARD SIZES:

FRAME SIZE (W x H) INCHES (mm)	WALL OPENING INCHES (mm)	LATCHES	WEIGHT LBS
HF 8-1/4" x 8-1/4" (210 x 210)	8-1/2" x 8-1/2" (216 x 216)	1	5.0 LBS.
HF 12" x 12" (305 x 305)	12-1/4" x 12-1/4" (312 x 312)	1	15.0 LBS.
HF 16" x 16" (406 x 406)	16-1/4" x 16-1/4" (413 x 413)	1	17.0 LBS.
HF 18" x 18" (457 x 457)	18-1/4" x 18-1/4" (464 x 464)	3	20.0 LBS.
HF 24" x 24" (610 x 610)	24-1/4" x 24-1/4" (616 x 616)	4	32.0 LBS.



NOTES:

1. PANTOGRAPH HINGE
2. DOOR
3. FRAME
4. SCREWDRIVER OPERATED LATCH
5. MOUNTING HOLES



For a complete list of options visit www.AccessDoorsCanada.ca

■ PROJECT DATA

Custom Sizes Available - Fast!

Scan or Click



To view Pricing and Additional Product Info.

PROJECT NAME :	QTY	W	H	OPTIONS
ARCHITECT :				
DEALER :				
CONTRACTOR :				
LOCATION :	SPECIAL INSTRUCTIONS :			
DATE :				
TAGGING INSTRUCTIONS :	SUBMITTAL APPROVAL : (signature or stamp)			

TELEPHONE:
1-800-679-3405
FAX:
1-888-622-9920



385 WILSON STREET EAST,
SUITE 302
ANCASTER, ON, L9G 2C1
CANADA



WEBSITE:
www.AccessDoorsCanada.ca
E-MAIL:
info@AccessDoorsCanada.ca