

SUBMITTAL/TECHNICAL DATA SHEET



SPECIFICATIONS

01. Frame with flashing (corners full welded)
 - NB-20 - 14 gauge P.B. Galv. Steel
 - NB-40 - 14 gauge P.B. Galv. Steel
 - NB-50 - 11 gauge aluminum
02. Pintle hinge
03. Gasket (All around cover)
04. Cover gauge
 - NB-20 - 14 gauge P.B. Galv. Steel
 - NB-40 - 11 gauge aluminum
 - NB-50 - 11 gauge aluminum
05. Cover liner
 - NB-20 - 22 gauge P.B. Galv. Steel
 - NB-40 - 18 gauge aluminum
 - NB-50 - 18 gauge aluminum
06. Spring lifting mechanism
07. 1" rigid fiberboard insulation
08. Slam latch
09. Inside and outside handles with padlock hasps
10. Arm guide bracket
11. 1" thick fiberglass cover insulation
12. Hold open arm with Red vinyl grip
13. Neoprene gasket
14. Lock strike & padlock hasp
15. Bilclip® flashing system
16. Guide arm

SHOP FINISH:

- STEEL: Red oxide primer
- ALUMINUM: Mill finish
- HARDWARE: Non-corrosive materials (Unless otherwise specified)

This product may be installed on either a flat or sloping roof. When installed on a slope, the hinge side must run parallel with the slope. If slope exceeds 30°, advise factory for modification

For a complete list of options visit www.AccessDoorsCanada.ca

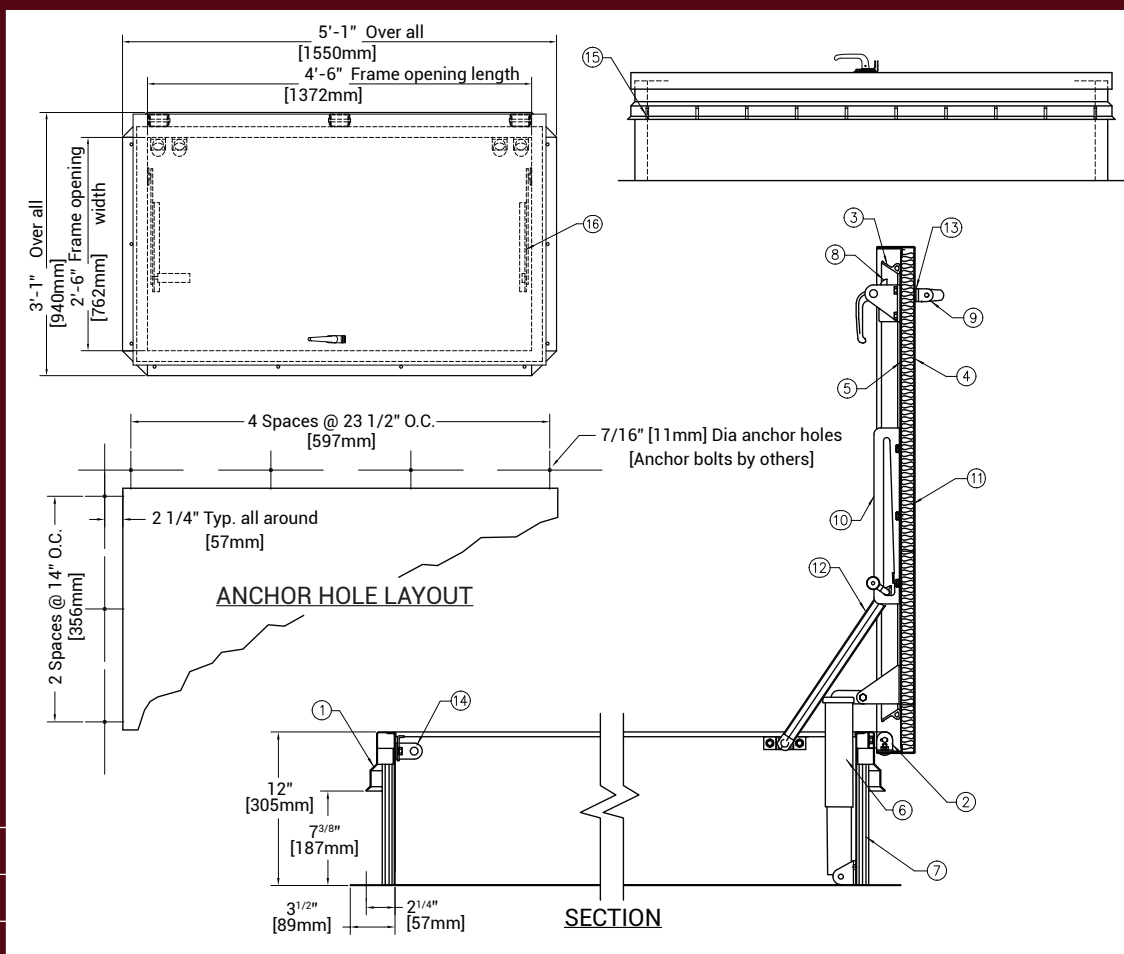


SKU: **ADC-NB-50**
SINGLE LEAF
ROOF SCUTTLE

TYPE NB

DIMENSIONS AND APPEARANCE

>> CLICK TO VIEW ADDITIONAL DETAILS AND PRICING <<



QTY	TYPE	SIZE (INCHES) WIDTH X LENGTH	METAL
<input type="checkbox"/>	NB-20	2'-6" X 4'-6"	STEEL COVER/ STEEL FRAME
<input type="checkbox"/>	NB-40	2'-6" X 4'-6"	ALUM. COVER/ STEEL FRAME
<input type="checkbox"/>	NB-50	2'-6" X 4'-6"	ALUM. COVER/ ALUM. FRAME

PROJECT DATA

Custom Sizes Available - Fast!

PROJECT NAME :	QTY	W	H	OPTIONS
ARCHITECT :				
DEALER :				
CONTRACTOR :				
LOCATION :	SPECIAL INSTRUCTIONS :			
DATE :				
TAGGING INSTRUCTIONS :	SUBMITTAL APPROVAL : (signature or stamp)			

Scan or Click



To view Pricing and Additional Product Info.

TELEPHONE:
1-800-679-3405
FAX:
1-888-622-9920



385 WILSON STREET EAST,
SUITE 302
ANCASTER, ON, L9G 2C1
CANADA



WEBSITE:
www.AccessDoorsCanada.ca
E-MAIL:
info@AccessDoorsCanada.ca